

Contents

I. Introduction

II. Organization

III. Business Scope

IV. Business Strategy



I. Introduction

“We support your Success”

TOMAS, was established in 2006 as one of world's supplier in marine field of ship's spare parts and marine machinery equipment.

Best quality, Good price, Customer satisfaction

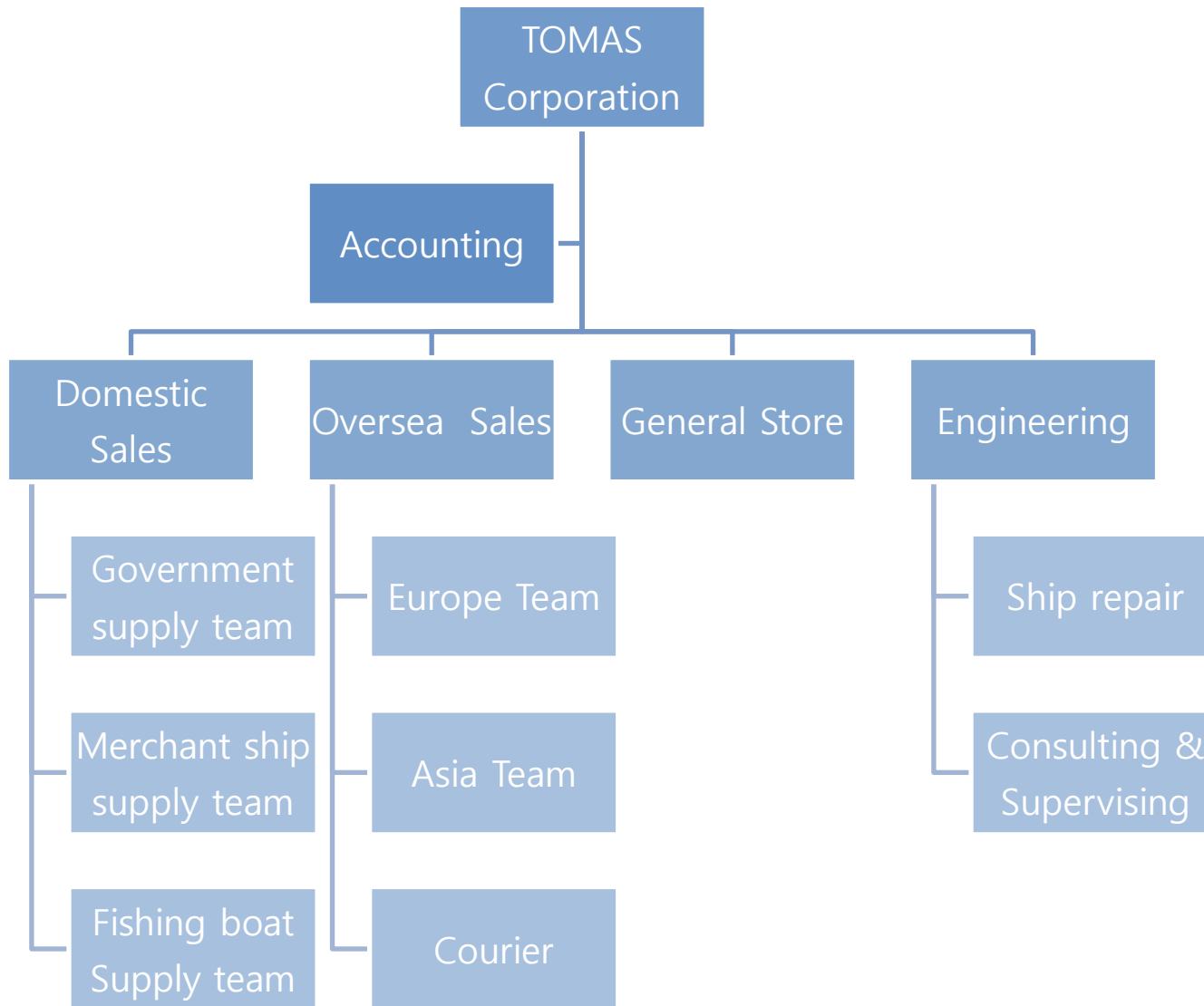
Based on strong experience and specialized skill in marine engine,
We will try to provide our clients with total satisfaction via prompt service and always seeing projects through to the end.

Please remember your reliable partner,
TOMAS will be with you anytime and any place.



President Sung-jin In

II. Organization



COMPANY HISTORY

**Contracted as Sales agent with
AQUASTA (Ballast Water Treatment
System)**

**Registered Korea government
public procurement service
(Marine engine, navy and coast
guard parts supply)**

2009
Feb

**Established TOMAS
Corporation Ltd**

2006
Aug

2008
Mar

2012
May

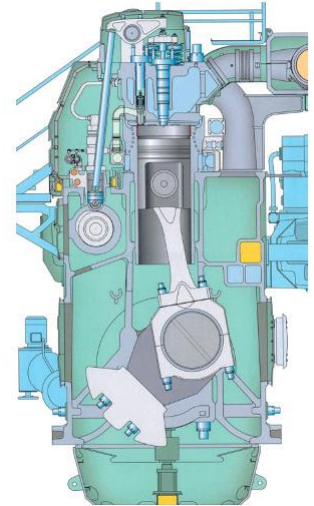
**Contracted as parts sales agent of
FME (HANJO FILTER)**

Contracted as sales agent with KSP (Marine engine valves and seats)



III. Major Business Scope

- **SPARE PART SALES OF MARINE ENGINE**
(Medium & low speed engine)
- **SPARE PART SALES OF MARINE
AUXILIARY MACHINERY**
(Boiler, pump , purifier & electric parts)
- **BUILDING MATERIALS FOR SHIPYARD**
- **SHIP REPAIR & ENGINEERING**



1. ENGINE TYPE (Manufacturers)



LOW SPEED ENGINE

K98 : ME7/MC7/ME-C7/MC-C7/ME6/MC6/ME-C6/MC-C6
S90 : ME-C8/MC-C8/ME-C7/MC-C7
K90 : ME9/ME-C9/MC-C6
S80 : ME-C9/ME-C8/MC-C8/ME-C7/MC-C7/MC6
K80 : ME-C9/ME-C6/MC-C6
S70 : ME-C8/ME-GI8/MC-C8/ME-C7/ME-GI7/MC-C7/MC6
L70 : ME-C8/MC-C8/ME-C7/MC-C7
S65 : ME-C8/ME-GI8
S60 : ME-B8/ME-C8/ME-GI8/MC-C8/ME-C7/ME-GI7/MC-C7/MC6
L60 : ME-C8/MC-C8/ME-C7/MC-C7
S50 : NE-B9/ME-B8/ME-C8/MC-C8/ME-C7/MC-C7/MC6
S46 : ME-B8/MC-C8/MC-C7
S42 : MC7
S40 : ME-B9
S35 : ME-B9/MC7
L35 : MC6

MEDIUM SPEED ENGINE

5T23LH-4E, L23/30, L23/30H, L23/30K, L23/30A
S28LH-4E, L28/32, L28/32H, V28/32H, L28/32A, L28/32VF
L27/38, L32/40, L32/40CD, V32/40



RT-flex96C, RTA96C
RT-flex84T, RTA84T
RT-flex82T, RTA82T
RT-flex82C, RTA82C
RT-flex68, RTA68
RT-flex60C
RT-flex50
RT-flex48T, RTA48T
RT-flex40, RTA40

DAIHATSU DIESEL

DL16, DL19, DL20, DL22, DL24, DL28, DL32, DL40
DS18A, DS22, DSD22, DSM26F, DS26A, DS28, DSM32
DK20, DK28, DK36, PKTB- 14A, PKTB-14A, PKTB-16A, MF24
PS18, PS20D, PS22D, PS26H/D, PS30D, PL24

Akasaka Diesels Limited

AH38/ AH40/D/F/ A31/34/37/41/DM30/33/36/38/40(A)K
/
DM46/47/UEC37H-HB/ UEC 37/88H UEC 37LA/ UEC45LA/
UEC52LA/ UEC52HA/UEC60HA/ UEC60LS/ UEC45HA/115

YANMAR

HAL, RAL, AL, GL, KEL, LAAL, LD, MAL, UAL, ZL
M200, M220, T220M, T240, T260
S165, S186, N160, N165, N18, N21, N260, N280, N330

HANSHIN DIESEL

L43SH, L46SH, EL30, EL32, EL35, EL38, EL40, EL44, ELS35, ELS44
LU24, LU26, LU26G, LU28, LUD26, LU32, LU32G, LU35, LU38, LU40
LU46A, LU50, LU54, LUD32, LUN28, LUS24, LUS28, LUS38, LUS40
LUS46, Z6EMRS, L26BGSH, LF28LRG, LF50, LH26G, LH28RG
LH28RG, LF50, LH26G, LF28RG, LH31G, LH34LA, LH41

MITSUBISHI HEAVY INDUSTRIES, LTD.

37LA, 37HII, 37HII-B, 45LA, 45HA, 52LA, 52LS, 52HA, 45L
37/88H, 45/115H, 45/75C, 45/80D, A28, A31, A34LA, A37,
A38, A45, AH25, AH27, AH28, AH30, AH36, AJ38, AH40
DM26, DH38SS, DM28AR, DM30, DM33, DM36, DM38,
DM40, DM46SS, DM47K, DM51SS, K28FD, K26SR

N/GATA

L13AHS, L16HS, L16X, L16XC, L18CX, L19HX, L20AX, M25AX,
M25BX, M25CX, M26AGT, M26KGHS, M28AFT, M28AGT, M28KGHS,
M28X, M28BX, M31X, M31EZ, M31HS, M31AFT, M33HS, M34AFTE,
M34X, M37HS, M37AHS, M37CHS, M37X, M40EX, LF18ANS, LF20,
NSF.G, PA5L

KOBE DIESEL CO., LTD.

52/125H, 52/105D, 52/105E, 52/105E, 52/ 105C, 52/90C, 52/90D

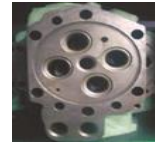
2. Major items



Exhaust Valve & Seat



Plunger barrel



Cylinder head



Cylinder Liner

Tomas has special strong advantages above these items. (Price & Delivery)



Piston



Piston Ring



Nozzle



Rings & Gaskets

3. AUXILIARY MACHINERY



TURBO CHARGER

Type : VTR, NR, MET, N
HP, NA
- Repair, Nozzle ring



WINDOW WIPER, CLEAR VIEW SCREEN

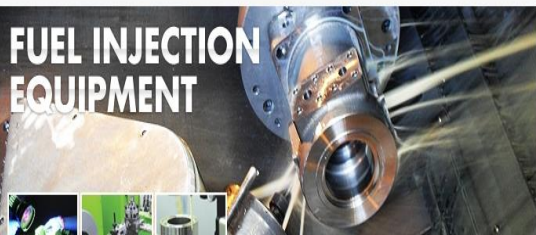
Tomas has special strong advantages above these items. (Price & Delivery)

| MACHINERY | MANUFACTURERS |
|----------------|---|
| BOILER | KANGRIM, MIURA, MITSUBISHI, VOLCANO, AALBORG |
| PURIFIER | SAMGONG, MITSUBISHI, ALFA LAVAL |
| AIR COMPRESSOR | JONGHAP, TANABE MATSUBARA |
| E/R PUMP | SHINSHIN, TAIKO, SHINKO, NANIWA, FRAMO |
| OTHERS | DECK MACHINERY, ACCOMODATION (CABIN), OUT FITTINGS, GENERAL BULKS |

3. Marine Fuel Injection Equipment

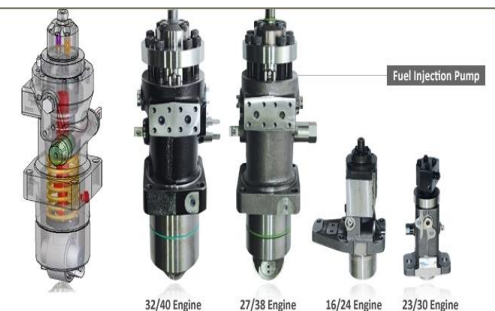
Fuel Injection Equipment

For 4 Stroke Fuel Injection Pump & Valve and Pump Barrel for 2Stroke processing equipment with state-of-the-art composite construction and integrated production system Injection for performance verification test, pressure test and so performing a complete quality assurance process, as has the trust of our customers and the economy.



32/40 Fuel Injection pump & valve part

• Fuel Injection Pump Assembly, Fuel Injection Valve Assembly
• Pump Barrel, Pump Element, Roller Tappet, H.P Connector



Fuel Injection Valve



• Application of Fuel Injection Pump & Vave (4-stroke MAN Engine)

| Engine type | 16/24 Engine | 23/30 Engine | 27/38 Engine | 32/40 Engine |
|------------------------|--------------|--------------|--------------|--------------|
| Pump Piston Ø | Ø 16 | Ø 20 | Ø 27 | Ø 32 |
| Valve Opening Pressure | 460 bar | 320 bar | 420 bar | 380 bar |

Pump Barrel



• Application of Fuel Pump Barrel (2-stroke MAN Engine)

| Engine type | 26 MC | 35 MC | 42 MC | 50 MC |
|-------------|-------|-------|-------|-------|
| Plunger Ø | Ø 25 | Ø 35 | Ø 45 | Ø 52 |
| Engine type | 60 MC | 70 MC | 80 MC | 98MC |
| Plunger Ø | Ø 63 | Ø 73 | Ø 76 | Ø 95 |

H.P Connector



4. Specialist of marine engine valve

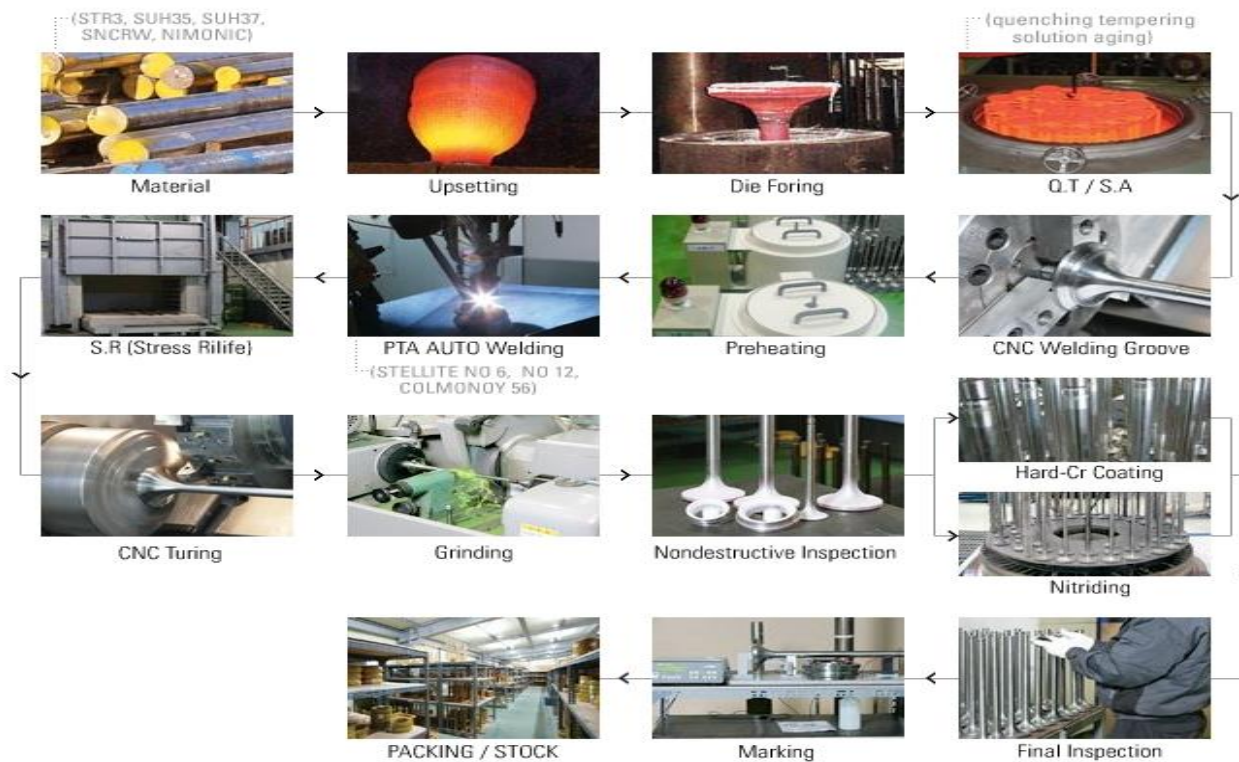
We are one of the leading companies of marine engine valves

We can produce about 600 types engine valves

Based on its own differentiated experience and technologies,
we manage the best quality products as follows

For the best quality production, the company thoroughly manages their materials and based on quality management system such as ISO 9001:2000, it handles its processes.

For the manufactured products, it conducts nondestructive inspection and dimensions check.



5. World's best cylinder liner specialist

TOMAS Corporation Ltd. has been supplying various marine engine cylinder liners from 2 stroke(low speed engine) to 4 stroke(medium speed engine) for a long time.



2 stroke engine cylinder liner



4 stroke engine cylinder liner

6. BUILDING MATERIALS for SHIPYARD



Transporter



Facility/Equipment



Machinery & Factory materials for shipyard

Machinery & Equipment for Offshore building



Plant/Offshore



Factory/shop

1. Equipment & machinery for shipyard operation
2. Factory & Facility for shipyard
3. Guidance for Layout of factory shop
4. All materials for Offshore building

IV. Business Strategy

The biggest concern for TOMAS Corporation Ltd is maximizing our customers profit

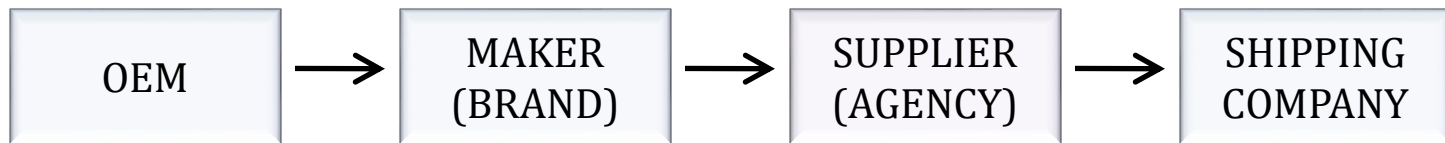


IV. Business Strategy

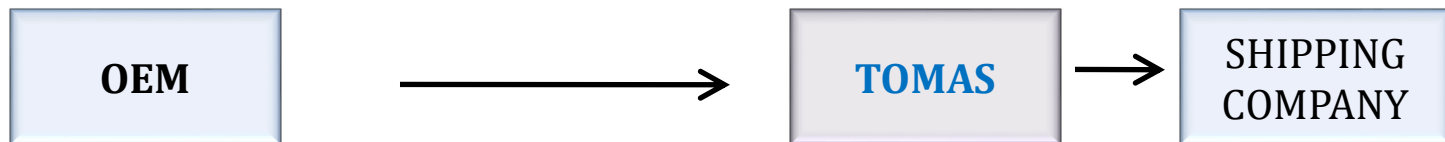
Supply from OEM directly

Tomas is trying to contact and recording supply data with OEM (Original Equipment Manufacturer) to save the cost of margin and delivery.

However Tomas will guarantee on this quality.



Customer shall be **saving** purchasing cost and delivery time!



**We want to share our best
technical services with you
anywhere in the world**

